

Clip-Lok Expendable Box for sensitive profiles used in lithium batteries for electrical vehicles.

This box is tailor-made for the highly sensitive aluminium profiles used in automotive industry. Our solution allows customers to transport aluminium profiles of different lengths. This way one box serves aluminium profiles in 5 different lengths. The aluminium profiles are protected by ETHA foam that can slide inside a dunnage at the base of the pallet. The box can be flat-packed with the dunnages, thereby making it easy to store.

Clip-Lok boxes:

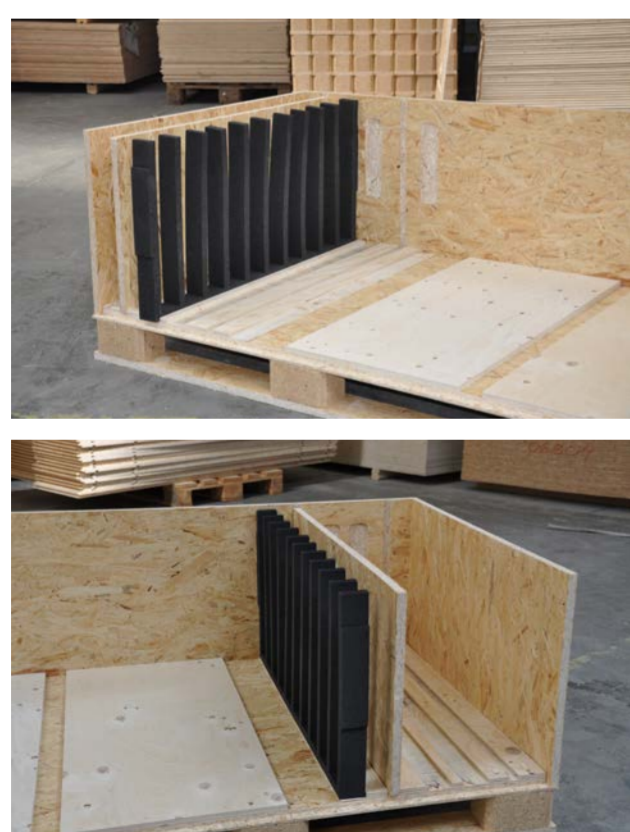
- are tailor made to suit needs of the customer.
- are ideal packaging for lean manufacturing.
- can be stacked without the need for racking.
- with ETHA foam dunnage keep the parts separated and securely loaded.
- can be easily and quickly flat-packed, reducing transport and storage volume by up to 80%.
- are suitable for transport by road, rail, sea or air.



Clip-Lok Expendable box flat-packed with dunnages integrated within the packaging.



Clip-Lok Expendable box built up with ETHA foam ready to protect the aluminium profiles.



Clip-Lok Expendable box can transport aluminium profiles of different lengths in one box.



Clip-Lok Expendable box loaded with aluminium profiles ready for transport.